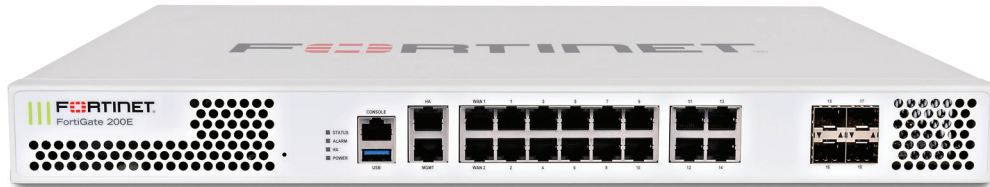


FortiGate® 200E Series

FortiGate 200E and 201E



The Fortinet Enterprise Firewall Solution delivers end-to-end network security with one platform, one network security operating system and unified policy management with a single pane of glass — for **the industry's best protection against the most advanced security threats and targeted attacks.**



Security Fabric Integration

FortiGate appliances, interconnected with the Fortinet Security Fabric, form the backbone of the Fortinet Enterprise Solution.



Deployment Modes

Distributed Enterprise Firewall
Next Generation Firewall



Hardware Acceleration

SPU CP9 and NP6Lite



Third-Party Certifications



20 Gbps
Firewall

2 Million
Concurrent Sessions



2.2 Gbps
IPS



1.8 Gbps
NGFW



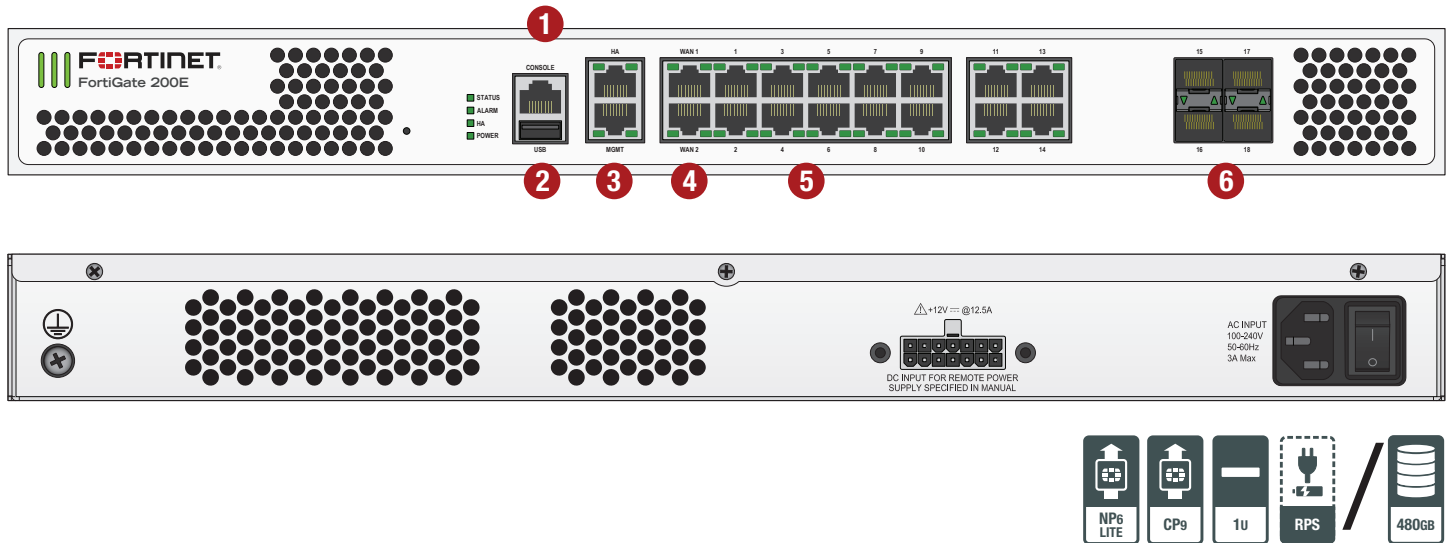
1.2 Gbps
Threat Protection



Multiple GE SPF DMZ | Multiple GE RJ45

HARDWARE

FortiGate 200E/201E



Interfaces

- | | |
|---|---|
| <ol style="list-style-type: none"> 1. Console Port 2. USB Port 3. 2x GE RJ45 Management/HA Ports | <ol style="list-style-type: none"> 4. 2x GE RJ45 WAN Ports 5. 14x GE RJ45 Ports 6. 4x GE SFP Slots |
|---|---|

Powered by SPU

- Combines a RISC-based CPU with Fortinet's proprietary Security Processing Unit (SPU) content and network processors for unmatched performance
- Simplifies appliance design and enables breakthrough performance for smaller networks
- Supports firewall acceleration across all packet sizes for maximum throughput
- Delivers accelerated UTM content processing for superior performance and protection
- Accelerates VPN performance for high speed, secure remote access



Content Processor

Fortinet's new, breakthrough SPU CP9 content processor works outside of the direct flow of traffic and accelerates the inspection of computationally intensive security features:

- Enhanced IPS performance with unique capability of full signature matching at ASIC
- SSL Inspection capabilities based on the latest industry mandated cipher suites
- Encryption and decryption offloading

Network Processor

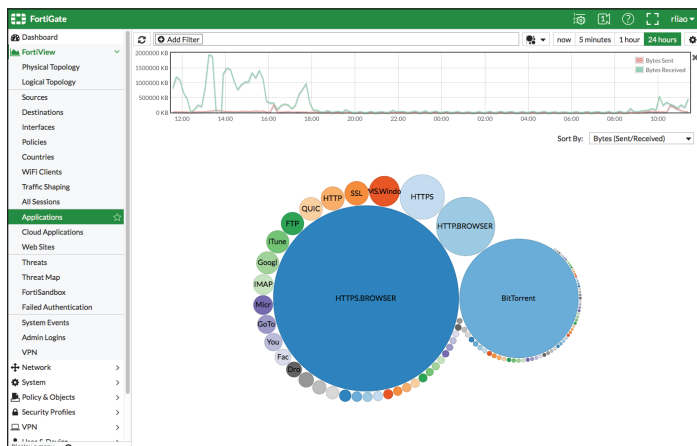
The SPU NP6Lite network processor works inline with firewall and VPN functions delivering:

- Wire-speed firewall performance for any size packets
- VPN acceleration
- Anomaly-based intrusion prevention, checksum offload and packet defragmentation
- Traffic shaping and priority queuing

SOFTWARE

FortiOS

Control all the security and networking capabilities across the entire FortiGate platform with one intuitive operating system. Reduce operating expenses and save time with a truly consolidated next generation security platform.



- A truly consolidated platform with one OS for all security and networking services for all FortiGate platforms.
- Industry-leading protection: NSS Labs Recommended, VB100, AV Comparatives and ICSA validated security and performance.
- Control thousands of applications, block the latest exploits, and filter web traffic based on millions of real-time URL ratings.
- Detect, contain and block advanced attacks automatically in minutes with integrated advanced threat protection framework.
- Solve your networking needs with extensive routing, switching, WiFi, LAN and WAN capabilities.
- Activate all the SPU-boosted capabilities you need on the fastest firewall platform available.



For more information, please refer to the FortiOS data sheet available at www.fortinet.com

SERVICES

FortiGuard™ Security Services

FortiGuard Labs offers real-time intelligence on the threat landscape, delivering comprehensive security updates across the full range of Fortinet's solutions. Comprised of security threat researchers, engineers, and forensic specialists, the team collaborates with the world's leading threat monitoring organizations, other network and security vendors, as well as law enforcement agencies:

- **Real-time Updates** — 24x7x365 Global Operations research security intelligence, distributed via Fortinet Distributed Network to all Fortinet platforms.
- **Security Research** — FortiGuard Labs have discovered over 170 unique zero-day vulnerabilities to date, totaling millions of automated signature updates monthly.
- **Validated Security Intelligence** — Based on FortiGuard intelligence, Fortinet's network security platform is tested and validated by the world's leading third-party testing labs and customers globally.

FortiCare™ Support Services

Our FortiCare customer support team provides global technical support for all Fortinet products. With support staff in the Americas, Europe, Middle East and Asia, FortiCare offers services to meet the needs of enterprises of all sizes:

- **Enhanced Support** — For customers who need support during local business hours only.
- **Comprehensive Support** — For customers who need around-the-clock mission critical support, including advanced exchange hardware replacement.
- **Advanced Services** — For global or regional customers who need an assigned Technical Account Manager, enhanced service level agreements, extended software support, priority escalation, on-site visits and more.
- **Professional Services** — For customers with more complex security implementations that require architecture and design services, implementation and deployment services, operational services and more.



Enterprise Bundle

FortiGuard Labs delivers a number of security intelligence services to augment the FortiGate firewall platform. You can easily optimize the protection capabilities of your FortiGate with the FortiGuard Enterprise Bundle. This bundle contains the full set of FortiGuard security services plus FortiCare service and support offering the most flexibility and broadest range of protection all in one package.

SPECIFICATIONS

	FORTIGATE 200E	FORTIGATE 201E
Hardware Specifications		
GE RJ45 WAN Interfaces		2
GE RJ45 Management/HA Ports		2
GE RJ45 Ports		14
GE SFP Slots		4
USB (Client / Server)		1 / 1
Console (RJ45)		1
Local Storage	—	480 GB
Included Transceivers		0
System Performance		
Firewall Throughput (1518 / 512 / 64 byte UDP packets)		20 / 20 / 9 Gbps
Firewall Latency (64 byte UDP packets)		3 µs
Firewall Throughput (Packets Per Second)		13.5 Mpps
Concurrent Sessions (TCP)		2 Million
New Sessions/Second (TCP)		135,000
Firewall Policies		10,000
IPsec VPN Throughput (512 byte packets)		9 Gbps
Gateway-to-Gateway IPsec VPN Tunnels		2,000
Client-to-Gateway IPsec VPN Tunnels		5,000
SSL-VPN Throughput		900 Mbps
Concurrent SSL-VPN Users (Recommended Maximum)		300
IPS Throughput (HTTP / Enterprise Mix) ¹		6 Gbps / 2.2 Gbps
SSL Inspection Throughput ²		1 Gbps
Application Control Throughput ³		3.5 Gbps
NGFW Throughput ⁴		1.8 Gbps
Threat Protection Throughput ⁵		1.2 Gbps
CAPWAP Throughput ⁶		1.5 Gbps
Virtual Domains (Default / Maximum)		10 / 10
Maximum Number of FortiAPs (Total / Tunnel Mode)		128 / 64
Maximum Number of FortiTokens		1,000
Maximum Number of Registered FortiClients		600
High Availability Configurations		Active / Active, Active / Passive, Clustering
Dimensions		
Height x Width x Length (inches)		6.49 x 20.07 x 22.44
Height x Width x Length (mm)		165 x 510 x 570
Weight	11.9 lbs (5.4 kg)	12.12 lbs (5.5 kg)
Form Factor		Rack Mount, 1 RU
Environment		
Power		100–240V AC, 50–60 Hz
Maximum Current	110 V / 3 A, 220 V / 1.5 A	110 V / 7 A, 220 V / 3.5 A
Power Consumption (Average / Maximum)		70.98 / 109.9 W
Heat Dissipation		374.9 BTU/h
Operating Temperature		32–104°F (0–40°C)
Storage Temperature		-31–158°F (-35–70°C)
Humidity		10–90% non-condensing
Operating Altitude		Up to 7,400 ft (2,250 m)
Compliance		
		FCC Part 15B, Class A, CE, RCM, VCCI, UL/cUL, CB, BSMI
Certifications		
		ICSA Labs: Firewall, IPsec, IPS, Antivirus, SSL-VPN; IPv6

Note: All performance values are "up to" and vary depending on system configuration. IPsec VPN performance is based on 512 byte UDP packets using AES-256+SHA1. 1. IPS performance is measured using 1 Mbyte HTTP and Enterprise Traffic Mix. 2. SSL Inspection is measured with IPS enabled and HTTP traffic, using TLS v1.2 with AES256-SHA. 3. Application Control performance is measured with 64 Kbytes HTTP traffic. 4. NGFW performance is measured with IPS and Application Control enabled, based on Enterprise Traffic Mix. 5. Threat Protection performance is measured with IPS and Application Control and Malware protection enabled, based on Enterprise Traffic Mix. 6. CAPWAP performance is based on 1444 byte UDP packets.

For complete, up-to-date and detailed feature set, please refer to the Administration Handbook and FortiOS Datasheet.

ORDER INFORMATION

Product	SKU	Description
FortiGate 200E	FG-200E	18x GE RJ45 (including 2x WAN ports, 1x Mgmt port, 1x HA port, 14x switch ports), 4x GE SFP slots, SPU NP6Lite and CP9 hardware accelerated.
FortiGate 201E	FG-201E	18x GE RJ45 (including 2x WAN ports, 1x Mgmt port, 1x HA port, 14x switch ports), 4x GE SFP slots, SPU NP6Lite and CP9 hardware accelerated, 480 GB onboard SDD storage.
Optional Accessories		
External redundant AC power supply	FRPS-100	External redundant AC power supply for up to 4 units: FG-100/101E, FG-300C, FG-310B, FS-348B and FS-448B. Up to 2 units: FG-200B, FG-200D, FG-200/201E, FG-240D and FG-300D, FG-400D, FG-500D, FG-600D, FHV-500D, FDD-200B, FDD-400B, FDD-600B and FDD-800B.
1 GE SFP LX transceiver module	FG-TRAN-LX	1 GE SFP LX transceiver module for all systems with SFP and SFP/SFP+ slots.
1 GE SFP RJ45 transceiver module	FG-TRAN-GC	1 GE SFP RJ45 transceiver module for all systems with SFP and SFP/SFP+ slots.
1 GE SFP SX transceiver module	FG-TRAN-SX	1 GE SFP SX transceiver module for all systems with SFP and SFP/SFP+ slots.



GLOBAL HEADQUARTERS
Fortinet Inc.
899 KIFER ROAD
Sunnyvale, CA 94086
United States
Tel: +1.408.235.7700
www.fortinet.com/sales

EMEA SALES OFFICE
905 rue Albert Einstein
06560 Valbonne
France
Tel: +33.4.8987.0500

APAC SALES OFFICE
300 Beach Road 20-01
The Concourse
Singapore 199555
Tel: +65.6395.2788

LATIN AMERICA SALES OFFICE
Sawgrass Lakes Center
13450 W. Sunrise Blvd., Suite 430
Sunrise, FL 33323
United States
Tel: +1.954.368.9990